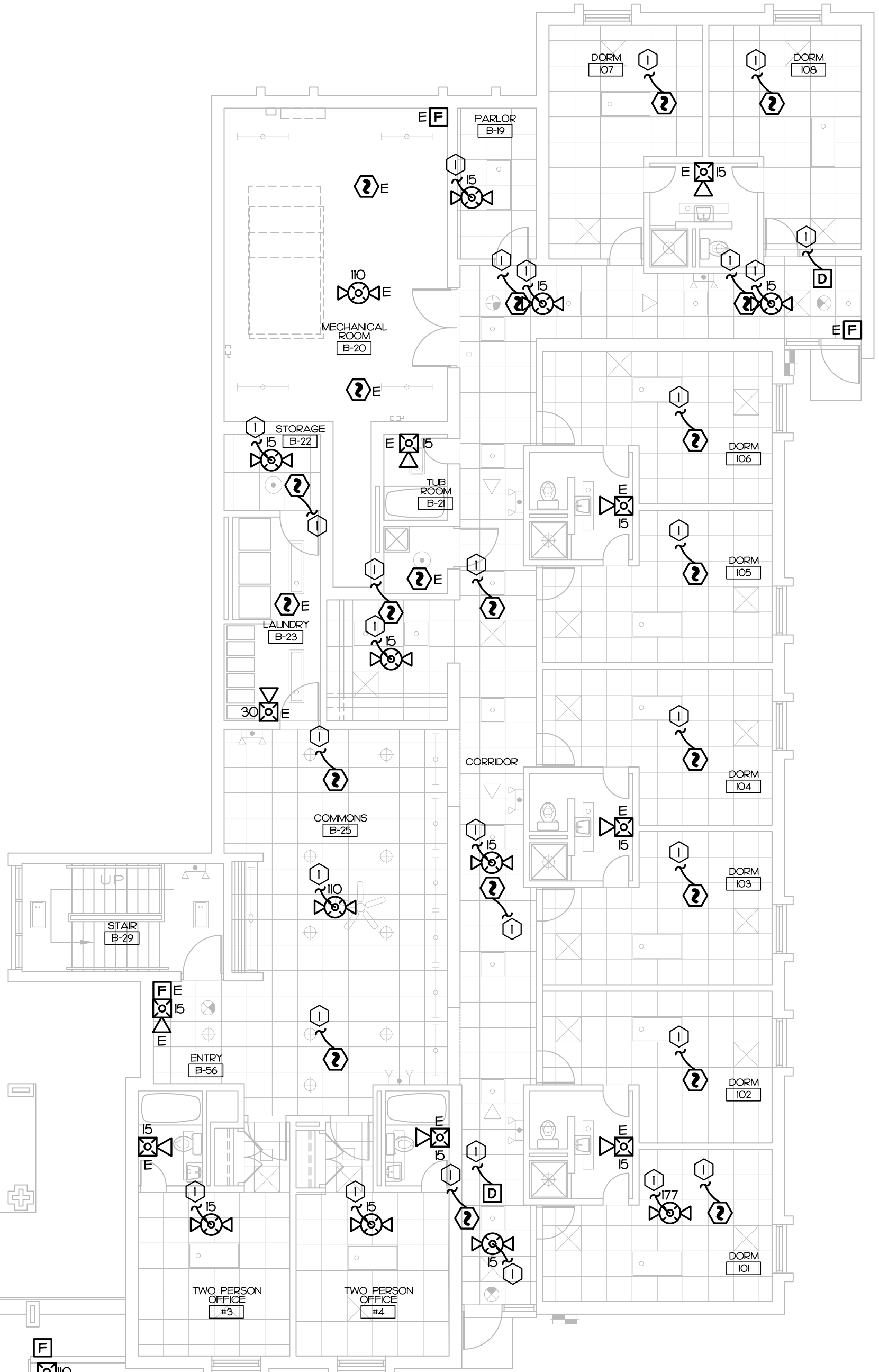
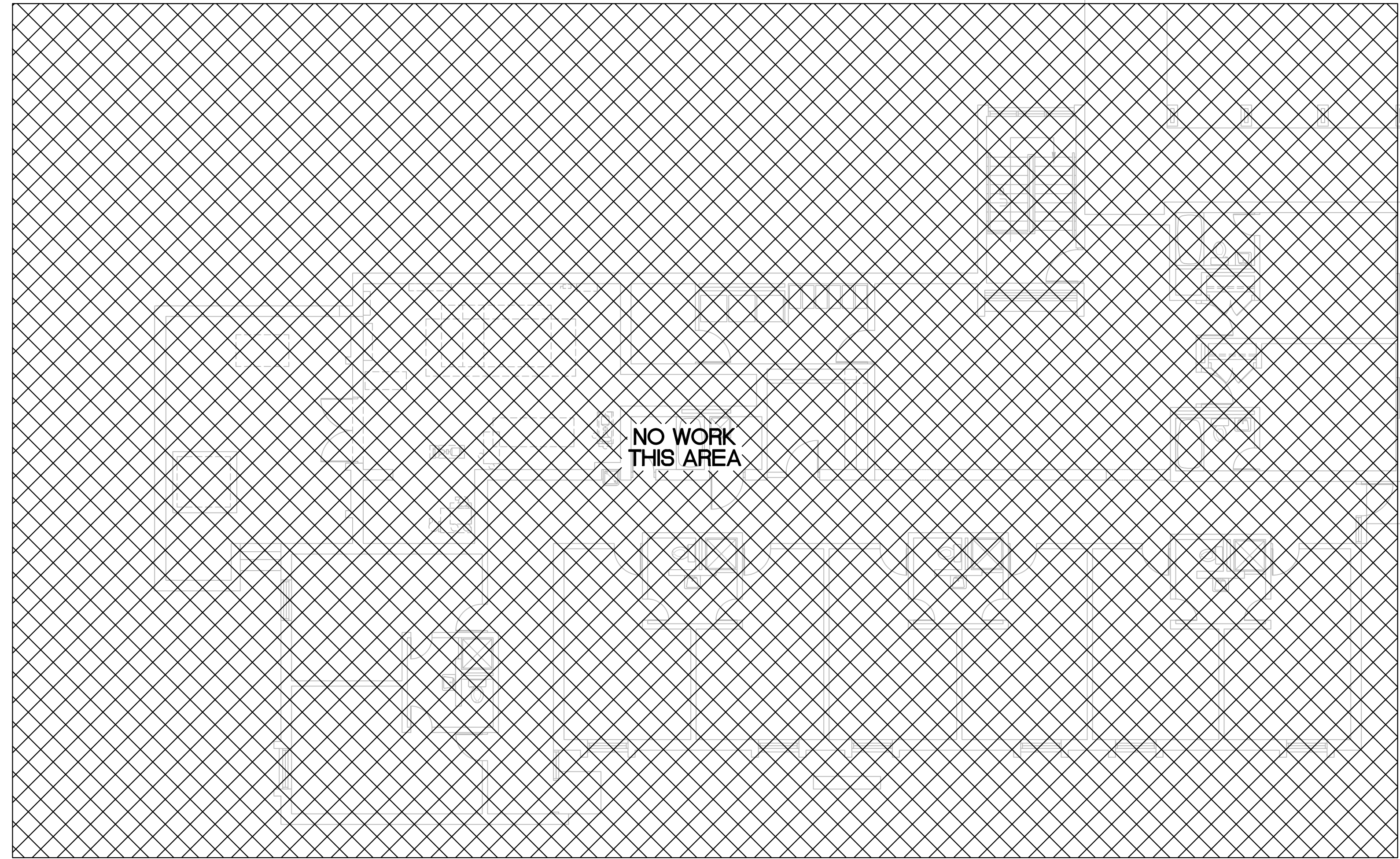


KEY NOTES

- 1
- EXISTING FIRE ALARM DEVICE TO BE REINSTALLED INTO THE NEW CEILING.
- 2
- NEW SPRINKLER RISER, 2 NEW TAMPER AND FLOW MONITORING MODULES AND MONITORING MODULE FOR PIV, MONITORING MODULE FOR HOT BOX TAMPER AND LOW TEMPERATURE SENSOR. SEE THE SITE CIVIL PLAN FOR EXACT LOCATION.
- 3
- TAMPER SWITCH AND LOW TEMP SENSOR AT HOT BOX. APPROXIMATE LOCATION. SEE CIVIL PLAN FOR EXACT LOCATION.
- 4
- TAMPER SWITCH AT PIV FOR BUILDING D. APPROXIMATE LOCATION. SEE CIVIL PLAN FOR EXACT LOCATION.
- 5
- TAMPER SWITCH AT PIV FOR BUILDING A/B. CONNECTS BACK TO BUILDING B FACP. APPROXIMATE LOCATION. SEE CIVIL PLAN FOR EXACT LOCATION.

NOTES:


- L
- CONTRACTOR TO INCLUDE AS PART OF THEIR BASE BID, THE RELOCATION OF UP TO 6 FIRE ALARM DEVICES PER BUILDING. THIS WILL BE TO ALLOW FOR MINOR RELOCATION OF FIRE ALARM DEVICES FOR COORDINATION WITH NEW SPRINKLER HEADS AND NEW LIGHT FIXTURES. ASSUME THE FIRE ALARM DEVICE MAY NEED TO BE SHIFTED TO AN ADJACENT TILE AND MAY REQUIRE REPLACEMENT OF THE EXISTING FLEX CONNECTIONS AND WIRING.



FIRE ALARM PLAN - BUILDING D1

SCALE: 1/8" = 1'-0"

1



3221 BLUE RIDGE ROAD, STE 113  
RALEIGH, NC 27612  
P: 919.571.1111

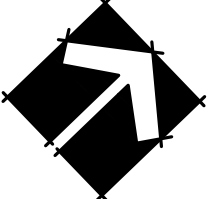
www.imegcorp.com

IMEG RESERVES PROPRIETARY RIGHTS, INCLUDING COPYRIGHTS, TO THIS DRAWING AND THE DATA SHOWN THEREON. SAID DRAWING AND/OR DATA ARE THE EXCLUSIVE PROPERTY OF IMEG AND SHALL NOT BE USED OR REPRODUCED FOR ANY OTHER PROJECT WITHOUT THE EXPRESS WRITTEN APPROVAL AND PARTICIPATION OF IMEG.  
©2024 IMEG CONSULTANTS CORP.  
North Carolina Design Registration #F-1507

0123

REF. SCALE IN INCHES

PROJECT # 24048



REVISIONS		5/27/25
FOR CONSTRUCTION		



ATLANTEC  
ENGINEERS, PA  
MEMBER OF  
IMEG  
3221 BLUE RIDGE ROAD, SUITE 113  
RALEIGH, NC 27612  
919.571.1111  
24048

PREPARED FOR:  
NC DEPARTMENT  
OF INSTRUCTION  
SCO #  
24-27792-01A

GOVERNOR MOREHEAD SCHOOL  
SPRINKLER, ADA TOILET, LIGHTING  
UPGRADES FOR DORMS A, B, + D  
RALEIGH, NC

CONTENTS:  
BUILDING D FIRST  
FLOOR FIRE ALARM  
PLAN

DATE:  
May 27, 2025

DESIGNER: SWM  
ENGINEER: DJW

SHEET NO.  
F-103  
OF